

Client: Live Borders Yellow News
Source: Southern Reporter
Date: 25/07/2019
Page: 54
Reach: 12033
Value: 1978.3000

Yellow News...

Powerful works of art with a strong ecological message

BY KEVIN JANIAK
gdlReporter
kevin.janiak@nmedia.co.uk

A major exhibition of the work of Borders-based artist Allan Renshaw is coming to the Tweeddale Gallery in Peebles, hosted by Live Borders.

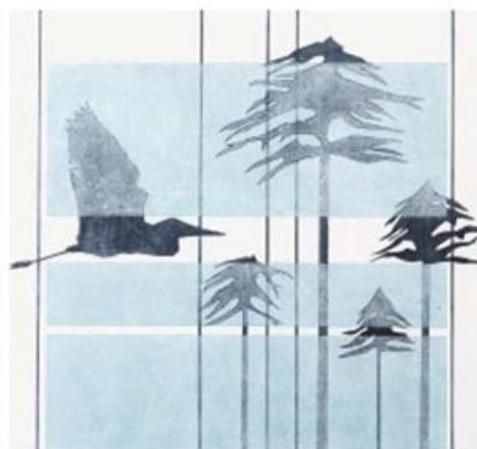
'Return to Origins' will feature work from three distinct series of paintings by Renshaw: 'Whaleback' and 'Heron Clan', which were produced in Scotland, and 'Songland' - a series painted in Canada.

His paintings have been described as "image-stories" dealing in earth and origins.

He explains that they are his contribution to a more "ecologically intelligent, nature-driven consciousness in humans".

Some of the work will be accompanied by incantations that, as well as forming the title of a piece, also serve as an aid to interpretation.

"Allan's work is stunning, and I



Return to Origins, Heron Pines - by Borders-based artist Allan Renshaw.

am very excited to be showcasing it in the Tweeddale Gallery," said Phoebe Stewart, assistant curator for Live Borders Museums and Galleries.

"As a charity, Live Borders is proud to champion high-quality, thought-provoking art.

"It is our aim to make lives in the community healthier, happier and stronger across the Scottish Borders."

A unique opportunity arises at 2pm on Saturday, August 24 - when you can meet the artist in the gallery.

Against the backdrop of his powerful paintings, Allan presents an informal discussion, incorporating a question-and-answer session, when he will talk about the ecological themes behind his work and his current psycho-archaeological explorations.

'Return to Origins' runs from

August 17 to October 12 at the [Tweeddale Museum](#) and Gallery, Peebles.

Opening times are from Monday to Friday, 10.30am-12.30pm and 1pm-4pm; and on Saturdays from 9.30am-12.30pm.

Admission is free, donations are welcome.

There will be extended opening hours during the Creative Peebles Festival, including evening and Sunday afternoon slots.

The extra opening times are as follows: Friday, August 23: 6-11pm; Saturday and Sunday, August 24-25: 1-4pm; and Saturday, August 31, and Sunday, September 1: 1-4pm.